



**CP ACTIVE**

# **Blaze the Trail Campaign**

## **2024 Impact Report**

Building more inclusive school to work pathways for students with cerebral palsy and similar disabilities.

Developed and driven by young people with cerebral palsy.



MADE POSSIBLE BY

**Cerebral Palsy**  
ALLIANCE

CPActive acknowledges the work of our community of advocates, in particular our CPActive 'Champions' and the Blaze the Trail Working Group. We thank them for their ongoing advocacy efforts for our community and their work in amplifying this campaign.

“

**It's time for our  
voices to be heard!**

*Every member of the CPActive community  
and disability advocates everywhere.*



# Contents

<a href="#">Who is CPAActive?</a>	<a href="#">4</a>
<a href="#">The Roots of the Blaze the Trail Campaign</a>	<a href="#">5</a>
<a href="#">What we are calling for</a>	<a href="#">6</a>
<a href="#">The NSW Labor Government commitment and our work to date</a>	<a href="#">7</a>
<a href="#">Our Impact</a>	<a href="#">10</a>
<a href="#">What we have achieved so far</a>	<a href="#">12</a>
<a href="#">Milestones on the road ahead</a>	<a href="#">13</a>
<a href="#">Other advocacy work of CPAActive</a>	<a href="#">14</a>
<a href="#">How to support the Blaze the Trail Campaign</a>	<a href="#">15</a>







# Who is CPActive?

CPActive is a grassroots advocacy community that **brings together people with cerebral palsy (CP)** and allies who are passionate about creating positive change.

Our goal is to **amplify the voice of lived experience** to make sure people with disability have a say on the issues that affect them.

CPActive is made possible by **Cerebral Palsy Alliance**, a global leader in cerebral palsy research, advocacy, services and assistive technology innovation.



## CPActive Blaze the Trail Working Group

Leading our campaign since its launch, are eight young people with lived experience of CP, whose experience and leadership has contributed to the strengths and achievements of the Blaze the Trail campaign to date.



**Sophie Geeves**  
(Chair)



**Marusha**  
**Pride**



**Riley**  
**Saban**



**Nicole**  
**Kozelj**



**Saranna**  
**Schultz**



**Eireann**  
**Wood**



**Nicholas**  
**Lapsley**



**Declan**  
**Lee**



# The Roots of the Blaze the Trail Campaign

The CPAActive Blaze the Trail campaign was designed, written and delivered through a **collaboration of 50+ young people** with lived experience of CP and similar disabilities.

Throughout 2022, they shared their insights on necessary changes to achieve **genuine disability inclusion** and equity in education and employment, and designed this campaign to get the attention of policy makers.

The success of the campaign is due directly to the fact that it has been **designed and driven** by the voice of those with lived experience of disability.

**In November 2022**, several CPAActive Champions launched the Blaze the Trail campaign at Barangaroo, Sydney, ahead of the 2023 NSW election. The event was attended by Ministers, CEOs, media, and community members.



**November, 2022**

Blaze the Trail Launch, Barrangaroo Sydney



# What we are calling for

We asked that all candidates and representatives at the 2023 NSW election to commit to **Inclusive School to Work Pathways** in a strategy that included three key things:

1

Clear, consistent, and enforceable guidelines for support around assessments at school and university for students living with disability

2

Pathways for people living with disability to enter the teaching workforce

3

A state-wide initiative supporting the development of pathways for students living with disability into large business, government departments and community organisations

“

Our key asks were developed by us because we are experts on what it's like to go through the education system as young people with cerebral palsy.

CPActive's Blaze the Trail campaign is the first of its kind: it is a campaign designed and led entirely by young people with CP. It's exciting to be a part of something that redefines disability rights advocacy.

## **Sophie Geeves**

CPActive Champion, Chair of the Blaze the Trail Working Group and CPActive Steering Committee Member





# CPActive amplifies the voices of lived experience, and policymakers are listening!

In March 2023, **NSW Labor Government** made a commitment to **work with CPActive** on the three key asks of the Blaze the Trail campaign, building a more inclusive school to work pathway for students with CP and similar disabilities.



**March, 2023**

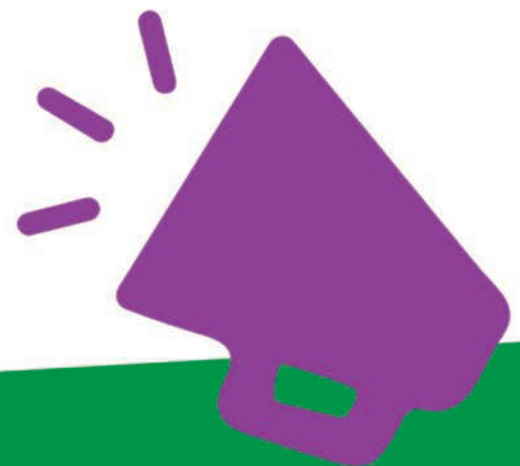
NSW Labor Press Conference,  
The Rocks Sydney

“

This commitment from NSW Labor highlights the power that young people with disability have when we come together and more so, the impact when leaders listen to us directly.

**Tahlia Blanshard**

CPActive Champion and  
Paramatilda



**Since the election of the Labor government in May 2023**, we have engaged with key policymakers who are committed to collaborating with CPActive to create equity in education, build disability representation and develop meaningful work opportunities for people with disabilities.





This is democracy in action and we want to make sure your voice continues to have input as we go forward to implementing our commitment and policies.

**The Hon. Kate Washington, MP**

**We are working to build our network of key stakeholders to help us achieve our campaign goals.**

**We have met and collaborated with:**

- NSW Minister for Disability Inclusion, Kate Washington
- NSW Public Service Commissioner, Katharina Lowe
- NSW Deputy Premier and Minister for Education, Prue Car
- NSW Educations Standards Authority (NESA) CEO, Paul Martin
- NSW Teachers Federation Senior Vice President, Natasha Watt



**April, 2024**

Meeting with The Hon. Prue Car, MP and The Hon. Kate Washington, MP at NSW Parliament House



“

“It’s been great to meet with policymakers and utilise the power of storytelling towards making change. We’re keen to work with the NSW Labor Government to create a more inclusive and accessible Australian education to employment experience.”

**Aman Gopalani**

CPActive Champion and CPActive Steering Committee Member



**April, 2024**

Sophie speaks at NSW Parliament

## CPActive has a voice to Parliament!

CPActive Champion and Chair of the Blaze the Trail working group, Sophie Gieves, presented a witness statement at the NSW Parliament Upper House Inquiry into children and young people with disability in NSW educational settings, alongside CPA’s Chair of Allied Health, Professor Iona Novak in April, 2024.

This statement followed our submission into the Inquiry, with the Blaze the Trail key asks being the centerpiece of our submission.





**March, 2023**

NSW Labor Press Conference, The Rocks Sydney

## Our impact

**250**

People with lived experience of CP involved in the development of the campaign

**8**

young people with CP leading the campaign for our community

**18K**

CPActive members with 600+ self identified as having lived experience of disability

**1780**

Blaze the Trail petition signatures

**1500+**

RSVP's for 11 online events, bringing our community together

**10K**

Views of the campaign video reached on social media



## Other big wins for CPActive

**Testing and strengthening of CPActive as a campaigning platform**

**The development of a full campaign that was informed by the CPActive community with lived experience of disability**

**Leadership development of a core group of young advocates through the process of leading the campaign**

**Engaging with key Ministers and Government staff, building the CPActive identity amongst key stakeholders**

**Activating the CPActive community and allies behind an important and exciting change initiative**



**April, 2024**

Meeting with The Hon.  
Kate Washington, MP at  
NSW Ministerial Offices



# Moving towards real change!

We have made progress on our work and have achieved some milestones in the first stage of the road towards a more inclusive school to work pathway for students with disability.



Collaborated with NSW Premiers Office to deliver the NSW Graduate Program Information Session for graduates with disabilities



Invited by NESA to be part of a consultation process for equitable HSC provisions for students with CP and other disabilities.

NSW Government supports recommendations from the Inquiry into children and young people with disability in NSW educational settings that directly respond to our submission and the evidence given by CPActive Champion member Sophie Geeves



## We know there's more work to be done!

We will be generating political pressure on the NSW Government to follow through on their commitments and make sure that our Blaze the Trail asks are a priority.



# Milestones on the road ahead



In collaboration with key stakeholders, the next milestones we are working towards include:

● **Collaborate with NSW Government on a Youth Summit**, bringing 50+ young people with disability in NSW to sit before Ministers and policy makers to share their experiences and collaboratively ideate solutions towards inclusion

● Work with the NSW Premiers Department on an **Inclusive Graduate Program Strategy**, working towards a measured increase of graduates with disability taking positions in the NSW Graduate Program and securing long term work with the NSW Public Sector

● Be a key voice in a **consultation process with NESA**, developing inclusive policies and practices for students requiring adjustments for their HSC exams

● Work with the NSW Department of Education on a **strategy towards increasing the number of teachers** with disability in schools

● **Roll out Blaze the Trail asks across all states and territories in Australia** to build more inclusive school to work pathways for all young Australians with disabilities



# Advocacy initiatives of CPActive

CPActive is **amplifying the voice** of those with lived experience of disability in order to create real impactful change towards **inclusion**.

We deliver **disability led campaigns, engage with and listen to our community, and deliver initiatives that build capacity** of all community members towards inclusion. We do all of this via online platforms with people all across Australia and the world.

**Some of our initiatives include:**

Online public events that bring people with disability and allies together

Online events restricted to just the community of people living with disabilities

Collaborative partnerships with community organisations

Programs and resources that build capacity towards inclusion

## Young Changemakers

Across 2023 and 2024, CPActive has delivered the **Young Changemakers** program to more than 50+ young people with CP in Australia, building their leadership and advocacy skills to become the next generation of disability leaders.

“

We are developing leaders through disability led initiatives. Young Changemakers is first of its kind and will produce graduates that will make waves for our community.

**Riley Saban**, CPActive Champion, Chair of the Young Changemakers Working Group and CPActive Steering Committee Member

*Such as Young Changemakers!*







## How you can support our campaign

There is a long road ahead, but we are committed to create more **inclusive school to work pathways** for young people with CP in Australia.

Help us continue to **apply pressure to policy makers** to ensure our voices are heard and our campaign asks are met.



### SIGN THE PETITION

Sign the Blaze the Trail petition and show policy makers this issue is important



### JOIN CPACTIVE

Become a CPActive ally by adding your name to our membership. It's FREE!



### SHARE OUR CAMPAIGN

Share CPActive across your networks to help us gain more visibility and momentum

Head to [cpactive.org.au](https://cpactive.org.au)

# TODAY!





**CPActive is an initiative of Cerebral Palsy Alliance**

ABN 45 000 062 288

PO Box 171, Forestville NSW 2087

**Phone:** 1300 888 378

**Email:** [info@cpactive.org.au](mailto:info@cpactive.org.au)

**Website:** [www.cpactive.org.au](http://www.cpactive.org.au)

**November 2024**



MADE POSSIBLE BY  
**Cerebral Palsy**  
ALLIANCE

CPActive acknowledges the Traditional Custodians of Country throughout Australia and recognises their continuing connection to land, waters and community. We pay our respects to Aboriginal and Torres Strait Islander cultures; and to Elders past and present.

CPActive also acknowledges the work of disability advocates that have come before us, knowing we could not be where we are today without their hard work and perseverance towards inclusion.